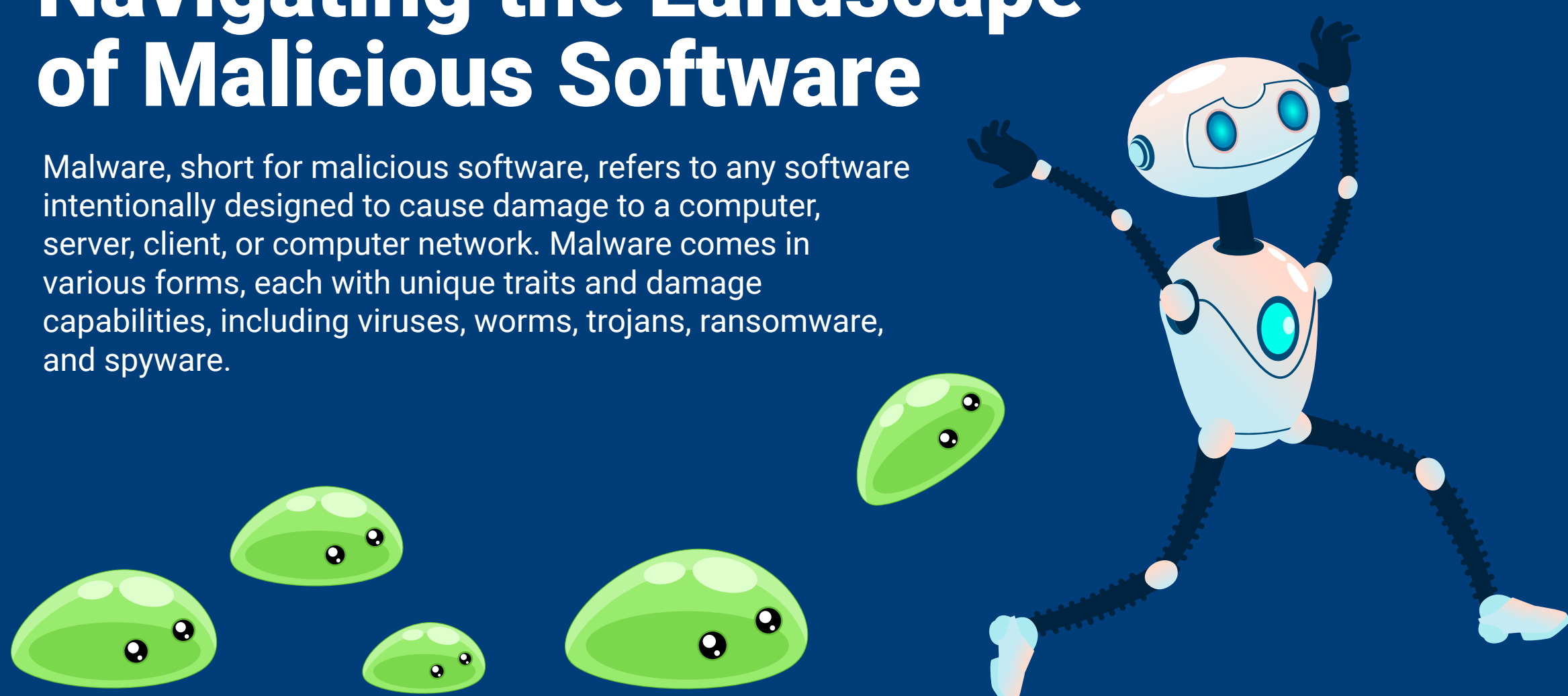


# Malware Menace: Navigating the Landscape of Malicious Software

Malware, short for malicious software, refers to any software intentionally designed to cause damage to a computer, server, client, or computer network. Malware comes in various forms, each with unique traits and damage capabilities, including viruses, worms, trojans, ransomware, and spyware.



## Infection

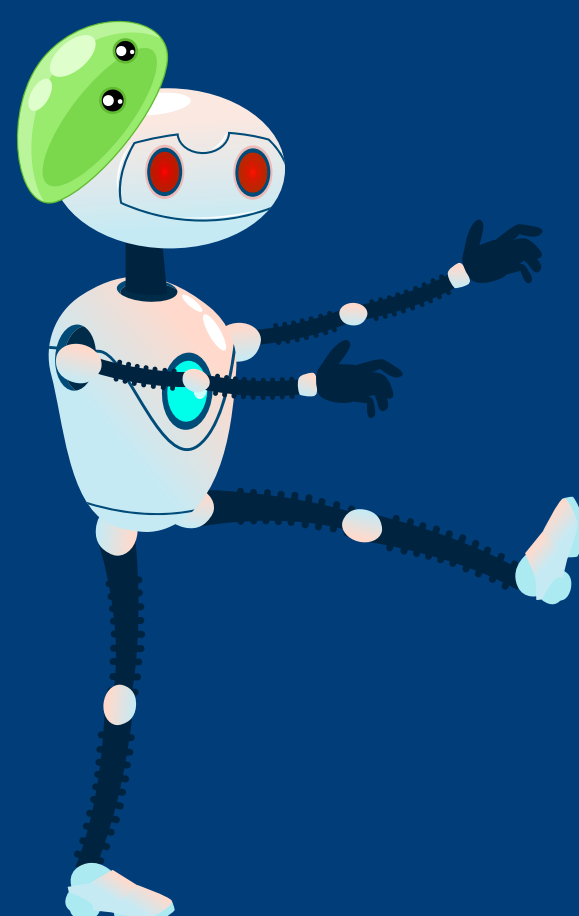
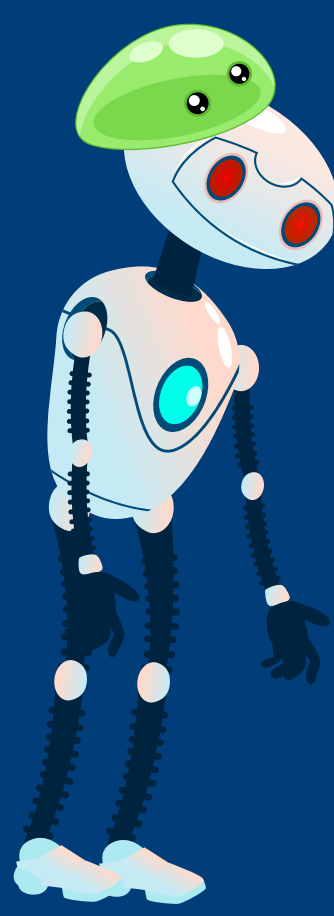
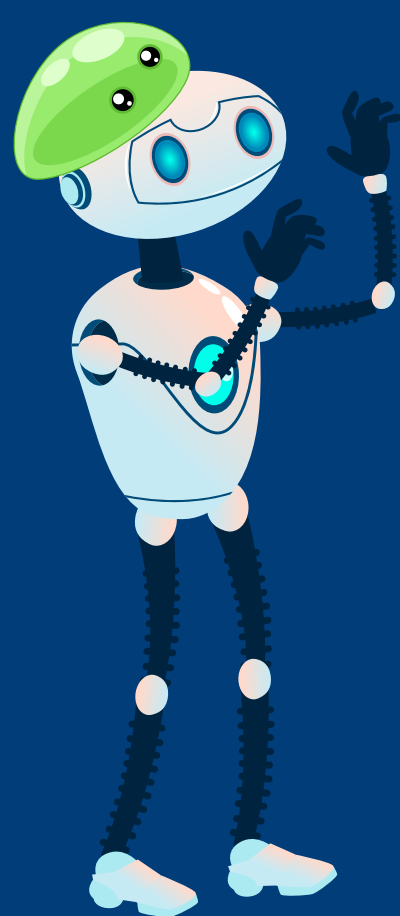
Malware can infect systems through email attachments, software downloads, operating system vulnerabilities, or physically via USB drives.

## Execution

Once inside the system, malware can execute various malicious activities, from destroying data and stealing information to hijacking core computing functions.

## Propagation

Some malware is designed to spread across networks, infecting other devices and escalating the scale of damage.



## The Destructive Impact of Malware

### Data Breach and Loss

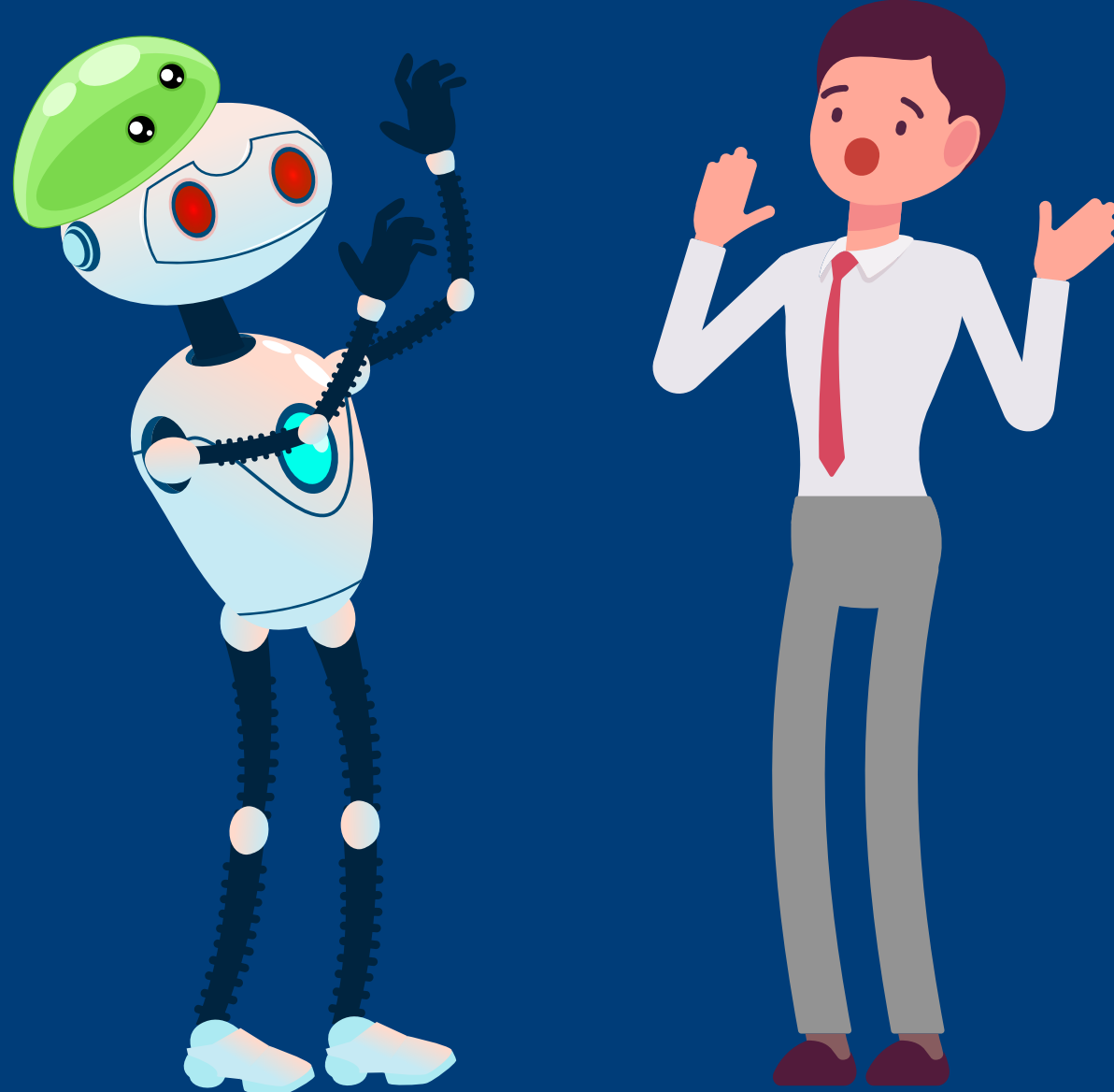
Malware can lead to the loss or theft of sensitive personal and corporate data.

### System Disruption

Malware infections can cause systems to malfunction or crash, disrupting business operations and leading to financial losses.

### Resource Hijacking

Certain types of malware can take over system resources, using them for tasks like cryptocurrency mining or launching attacks on other systems.

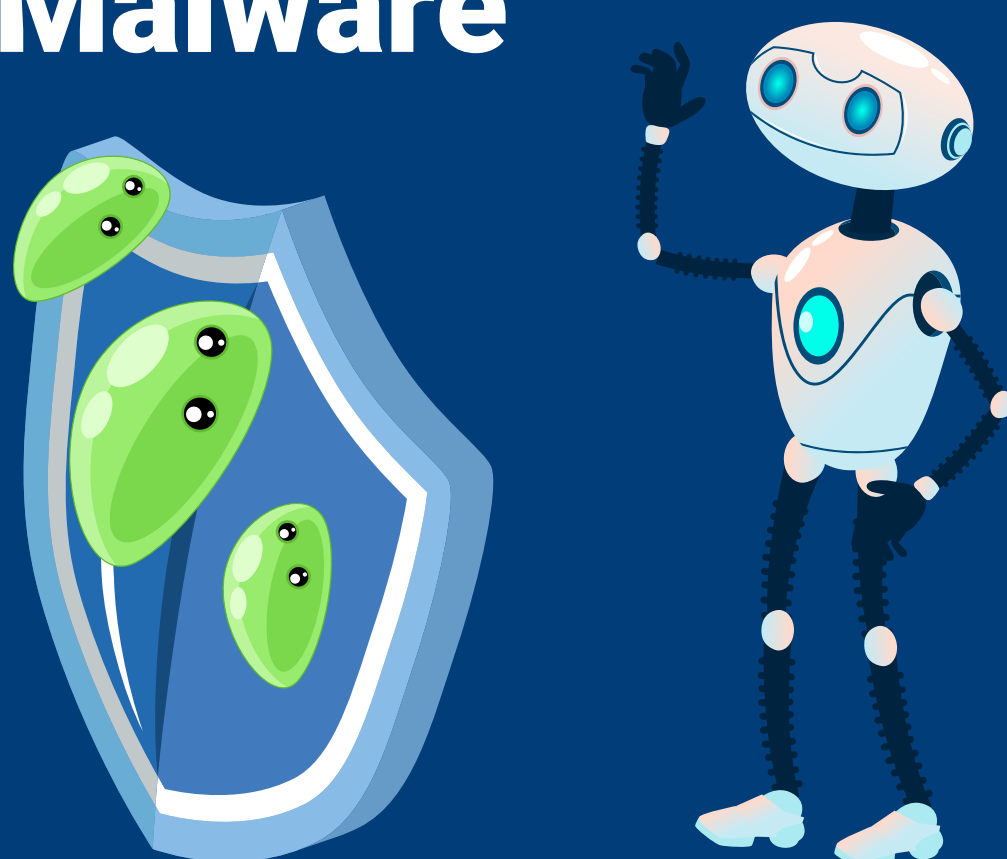


## BTC Tech Protect®: Your Shield Against Malware

With cutting-edge antivirus solutions and regular security audits, BTC Tech Protect® ensures that your defenses against malware are robust and responsive.

Navigating this threat landscape requires constant vigilance, up-to-date knowledge, and a proactive approach to cybersecurity.

Rest assured that your systems are guarded, your data is secure, and your operations are shielded from the destructive impact of malware.



**Your security is our priority.  
Let's protect it together.**

**(918) 366-8000**

[BOOK A MEETING](#)

**BTC**  
Tech Protect®  
[BTCBroadband.com](https://BTCBroadband.com)